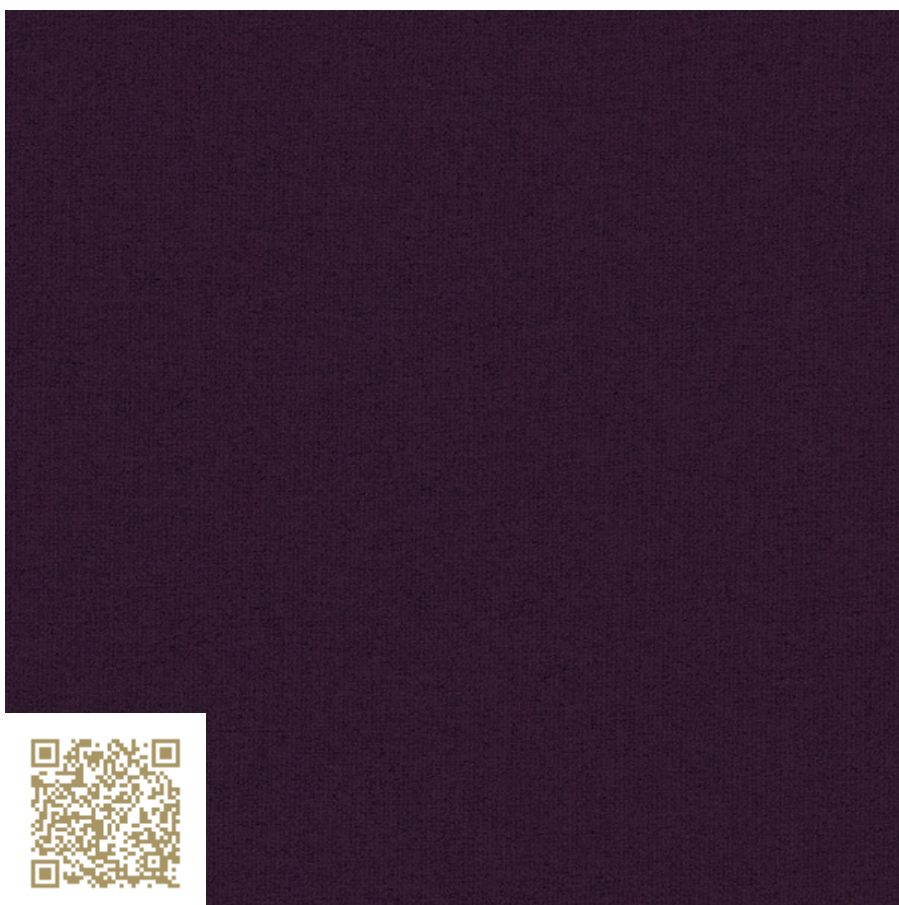


**CRÉATION
BAUMANN**

VIEW

0848**ALEX****Création Baumann**

<https://www.creationbaumann.com/> | mail@creationbaumann.com

Type: Furniture fabric | Polyester

100% Polyester flammhemmend (Trevira CS)

Möbelstoff in Trevira CS; Schwerer und strapazierfähiger Bezugsstoff in Panamabindung. Die Farbpalette mit 50 Tönen ist vielseitig und reicht von klassisch bis modern. Der Überfärber aus drei Grundqualitäten sorgt für satte sowie sanfte und dunkelmelierte Töne.

mtextur ID	93932
Manufacturer	Création Baumann
Manufacturer-Email	mail@creationbaumann.com
Product Line	ALEX
Product Line Info	Möbelstoff in Trevira CS; Schwerer und strapazierfähiger Bezugsstoff in Panamabindung. Die Farbpalette mit 50 Tönen ist vielseitig und reicht von klassisch bis modern. Der Überfärber aus drei Grundqualitäten sorgt für satte sowie sanfte und dunkelmelierte Töne.
Material Name	0848
Type	Furniture fabric / Polyester
Material Info	100% Polyester flammhemmend (Trevira CS)
IFC	IfcCovering / IfcFurniture
Area of application (mtextur Classic)	Inside / Furniture
Delivery zones	CH / DE / AT / LI

IMPORTANT LEGAL INFORMATION FOR USAGE OF THE MTEXTUR-DATABASE AND MTEXTUR DATASHEET:

In the mtextur-database and the mtextur-datasheet you can find a variety of high-quality digitalized materials, classified according material-type and subtype, color scope, field of application, manufacturer and product-line. The liability of the colors and the pattern of a CAD-texture can not always be guaranteed. For binding samples and additional questions please get in contact with the manufacturer or reseller directly (request link on material page). The information found on the mtextur-database is carefully collected and tested. Nevertheless are there possibilities for mistakes or wrong information. The publisher, h2c GmbH, the according manufacturers and resellers are not liable for any missing or incorrect information and its outcome, except h2c GmbH acts insofar willful.

max. Length / Format	Width = 1400 mm
Weight	0.339 kg/m ²
Sound absorption	0.8 α_w
Lightfastness	5-6
Characteristics Info	<p>Möbelstoffe für öffentliche Räume von Création Baumann erfüllen strengste Anforderungen bei maximaler Freiheit in der Gestaltung.</p> <p>Die bewährten Gewebe, feinen Materialien und auf kunstvolle Art einfach gestalteten Oberflächen sind zeitlos, langlebig und schwer entflammbar – sowie das beste Kompliment für jede Architektur.</p>

IMPORTANT LEGAL INFORMATION FOR USAGE OF THE MTEXTUR-DATABASE AND MTEXTUR DATASHEET:

In the mtextur-database and the mtextur-datasheet you can find a variety of high-quality digitalized materials, classified according material-type and subtype, color scope, field of application, manufacturer and product-line. The liability of the colors and the pattern of a CAD-texture can not always be guaranteed. For binding samples and additional questions please get in contact with the manufacturer or reseller directly (request link on material page). The information found on the mtextur-database is carefully collected and tested. Nevertheless are there possibilities for mistakes or wrong information. The publisher, h2c GmbH, the according manufacturers and resellers are not liable for any missing or incorrect information and its outcome, except h2c GmbH acts insofar willful.